

A C D E G U

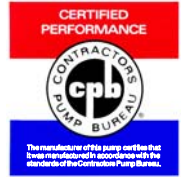


Gasoline Engine Driven

Self Priming Centrifugal Pump

Model 11 1/2A2-9

Size 1-1/2" x 1-1/2"



6 MT

Total Head		Capacity of Pump in U.S. Gallons per Minute (GPM) at Continuous Performance				
P.S.I.	Feet					
40.7	94	18	18	18	18	18
34.7	80	37	45	48	48	48
26.0	60	42	55	72	83	83
17.3	40	43	56	75	91	107
8.7	20	44	57	76	92	112
Suction Lift		25'	20'	15'	10'	5'



PUMP SPECIFICATIONS

Size: 1-1/2" x 1-1/2" (38 mm x 38 mm) NPT - Female.

Casing: Gray Iron No. 30.

Maximum Operating Pressure 69 psi (476 kPa).*

Semi-Open Type, Two Vane Impeller: Gray Iron No. 30.

Handles 1" (25,4 mm) Diameter Spherical Solids.

Replaceable Wear Plate: Carbon Steel No. 1018.

Intermediate Bracket: Gray Iron No. 30.

Seal: Double, Grease-Lubricated with Spring Loaded Grease Cup. Sintered Bronze Stationary Seal Seats. Steel Rotating Faces. Neoprene Packing Rings. Maximum Temperature of Liquid Pumped, 110°F (43°C). Maximum Suction Pressure 10 psi (69 kPa).*

Seal Liner: Copper Alloy No. C26000.

Flap Valve: Steel, Gray Iron No. 30 and Buna-N ^{w/}Nylon Reinforcement.

Flange: Gray Iron No. 30.

Gaskets: Cork and Vegetable Fiber.

Hardware: Standard Plated Steel.

Standard Equipment: Roll Cage ^{w/}Rubber Feet. Strainer. Ductile Iron 90° Discharge Elbow.

Optional Equipment: Wheel Kit with two 10" x 2.75" (254 mm x 70 mm) Semi-Pneumatic Tires. Consult Factory for Additional Options.

**Consult Factory for Applications Exceeding Maximum Pressure and/or Temperature Indicated.*



ENGINE SPECIFICATIONS

Model: Briggs & Stratton 9.

Type: Single Cylinder, Four Cycle, Air Cooled, Gasoline Engine.

Displacement: 9.02 Cu. In. (148 cc).

Carburetor: Pulsa-Jet.

Governor: Air Vane.

Lubrication: Splash System.

Air Cleaner: Paper Element.

Oil Reservoir: 1.25 U.S. Pts. (0,6 liter).

Fuel Tank: 3 U.S. Qts. (2,8 liter).

Full Load Operating Time: 4.2 Hrs.

Starter: Rope Rewind.

Standard Equipment: Muffler ^{w/}Deflector. Manual Choke, Stop, and Friction Control with Top Speed Limit.

BRIGGS & STRATTON PUBLISHED PERFORMANCE:

Maximum Continuous 3.0 BHP (2,2 kW) @ 3600 RPM



THE GORMAN-RUPP COMPANY • MANSFIELD, OHIO

GORMAN-RUPP OF CANADA LIMITED • ST. THOMAS, ONTARIO, CANADA

www.grpumps.com

Specifications Subject to Change Without Notice

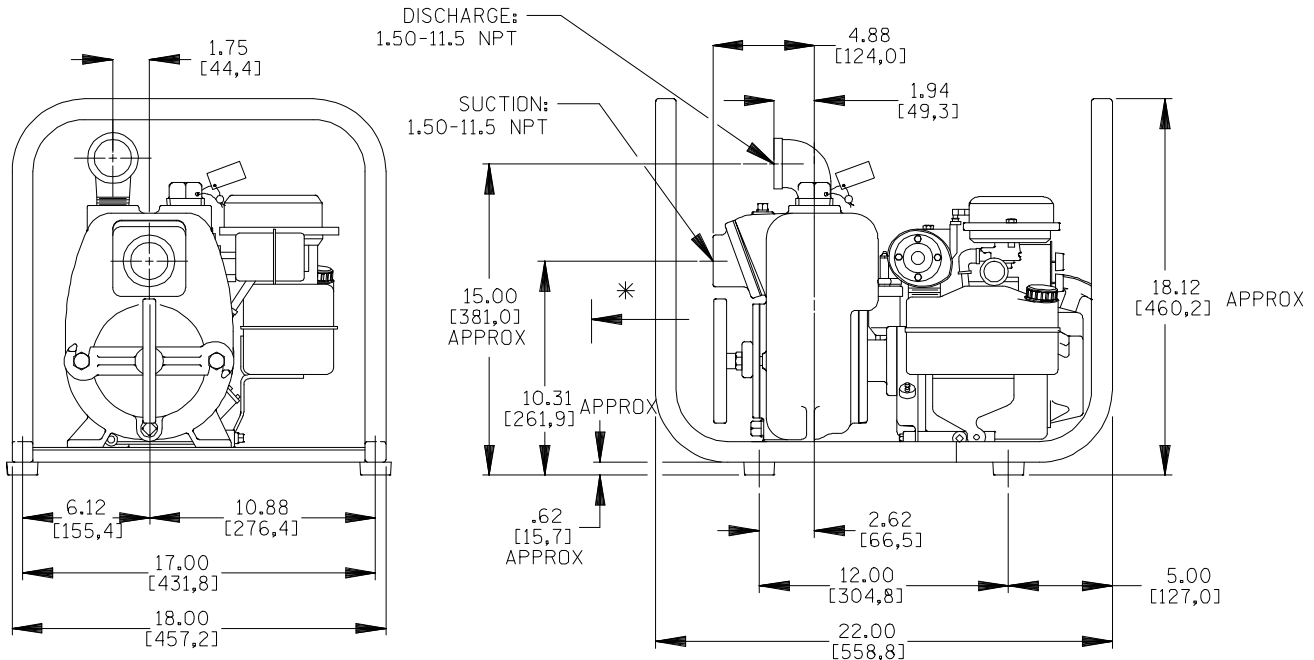
Printed in U.S.A.

Specification Data

SECTION 45, PAGE 200

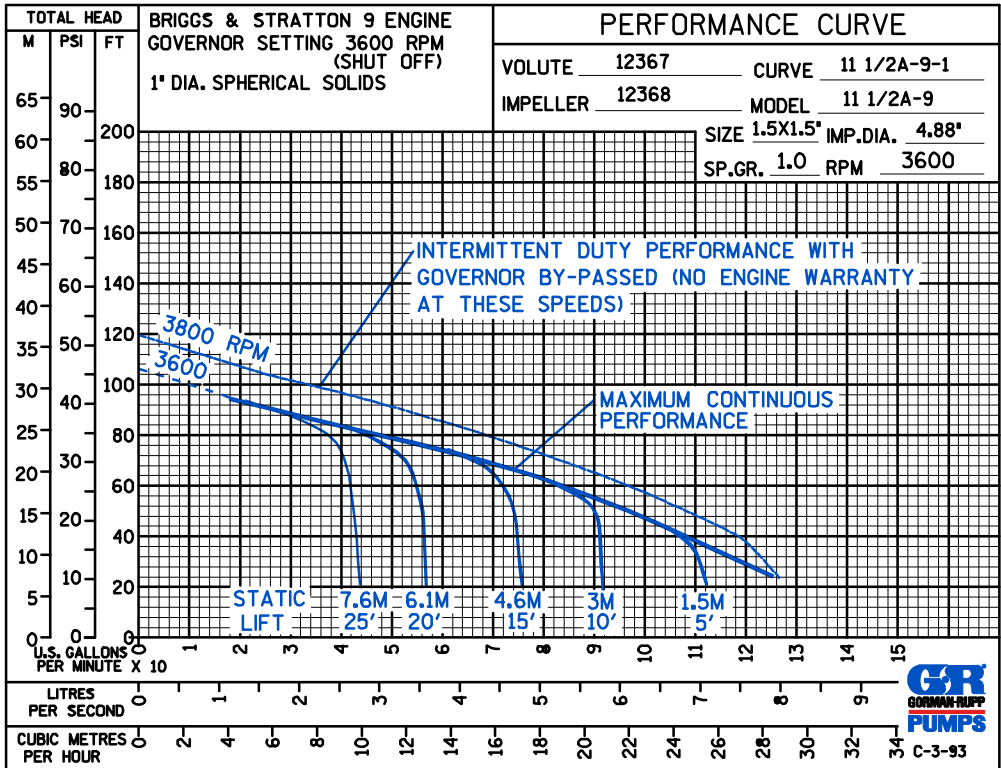
APPROXIMATE DIMENSIONS and WEIGHTS

NET WEIGHT: 86 LBS. (39 KG.)
 SHIPPING WEIGHT: 96 LBS. (43,5 KG.)
 EXPORT CRATE SIZE: 5.6 CU. FT. (0,16 CU. M.)
 WHEEL KIT ADD 25 LBS. (11.3 KG.);
 SHIPPING CRATE (SEPARATE) 3 CU. FT. (0,08 CU. M.)



DIMENSIONS:
 INCHES
 [MILLIMETERS]

* 18.00/[457,2] RECOMMENDED FOR REMOVAL OF BACK COVER PLATE
 6.00/[152,4] REQUIRED FOR REMOVAL OF BACK COVER PLATE



THE GORMAN-RUPP COMPANY • MANSFIELD, OHIO

GORMAN-RUPP OF CANADA LIMITED • ST. THOMAS, ONTARIO, CANADA

Specifications Subject to Change Without Notice

Printed in U.S.A.