



Self Priming Centrifugal Pump

Models 14D1-GX390 and 14D52-GX390

Size 4" x 4"

Click here
for prices
or to buy now

Total Head		Capacity Of Pump In U.S. Gallons Per Minute (GPM) At Continuous Performance				
PS.I.	Feet					
40.7	94	75	75	75	75	75
34.7	80	200	200	200	200	200
26.0	60	270	345	360	360	360
17.3	40	290	380	480	510	510
8.7	20	300	400	490	575	610
Suction Lift		25'	20'	15'	10'	5'



PUMP SPECIFICATIONS

Size: 4" x 4" (102 mm x 102 mm) NPT - Female.

Casing: (14D1) Aluminum Alloy 356-T6 w/Gray Iron 30 Cutwater Insert.

(14D52) Gray Iron 30.

Maximum Operating Pressure 66 psi (445 kPa).*

Semi-Open, Two Vane Impeller: Ductile Iron 65-45-12. Handles 2" (50,8 mm) Diameter Spherical Solids.

Removable Cover Plate:

(14D1) Aluminum Alloy 356-T6.

(14D52) Gray Iron 30.

Replaceable Wear Plate: Carbon Steel ASTM A36.

Seal: Type 31, Mechanical, Self-Lubricated. Silicon Carbide Rotating and Stationary Faces. Fluorocarbon Elastomers (DuPont Viton® or Equivalent). Stainless Steel 18-8 Cage and Spring. Maximum Temperature of Liquid Pumped 160°F (71°C).*

Flap Valve: Buna-N w/Nylon Reinforcement; Gray Iron 30.

Flanges:

(14D1) Aluminum Alloy 356-T6.

(14D52) Gray Iron 30.

Gaskets: Cork with Nitrile Binder (NC710).

Hardware: Standard Plated Steel.

Standard Equipment: Roll Cage w/Rubber Feet. 90° Discharge Elbow. Strainer.

Optional Equipment: Wheel Kit w/Semi-Pneumatic Tires.

*Consult Factory for Applications Exceeding Maximum Pressure and/or Temperature Indicated.



ENGINE SPECIFICATIONS

Model: Honda GX390.

Type: Single Cylinder, Air Cooled, Overhead Valve, Gasoline Engine.

Displacement: 23.7 Cu. In. (388 cc).

Cylinder: Aluminum Alloy.

Air Cleaner: Dual Element.

Fuel Tank: 6.9 U.S. Qts. (6,5 liter).

Full Load Operating Time: 1.2 Hrs.

Starter: Recoil.

Ignition System: Transistorized Magneto.

Standard Equipment: Muffler w/Guard. Rotary Stop Switch. Manual Throttle Control w/Top Speed Limit. Manual Choke and Fuel Valve. Oil Alert™ Shut Down. Fill/Drain Ports Each Side w/Dipstick One Side Only. Spark Plug Cover.



GORMAN-RUPP PUMPS

www.grpumps.com

Specifications Subject to Change Without Notice

© Copyright Gorman-Rupp Pumps 2014



DJ Gongol & Associates, Inc.

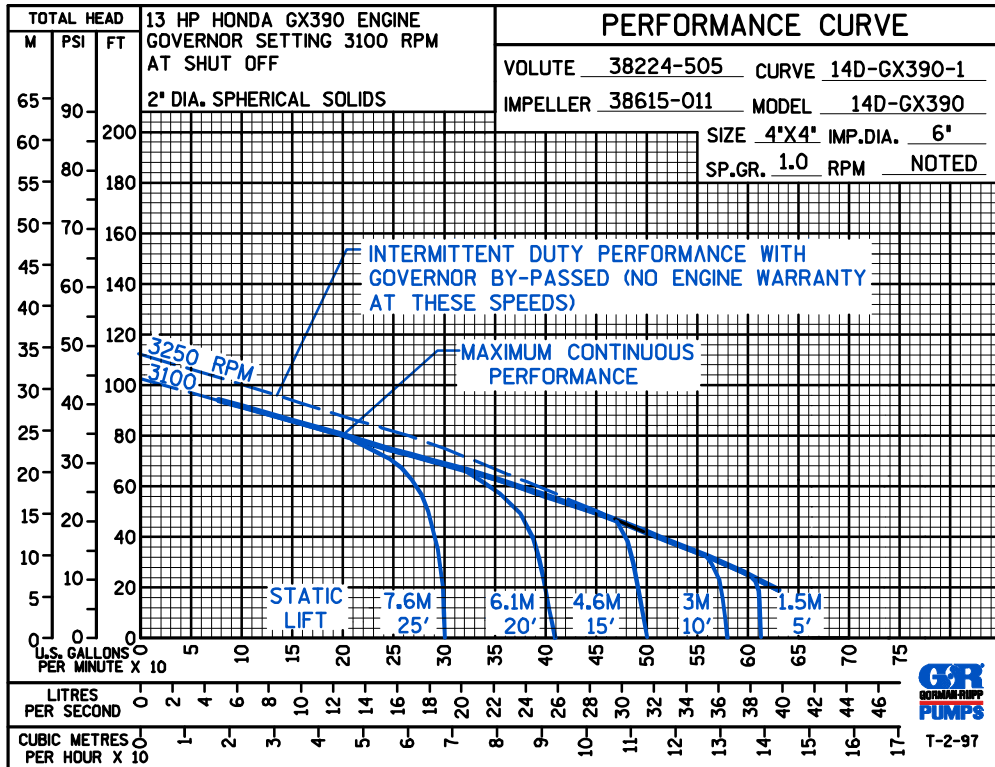
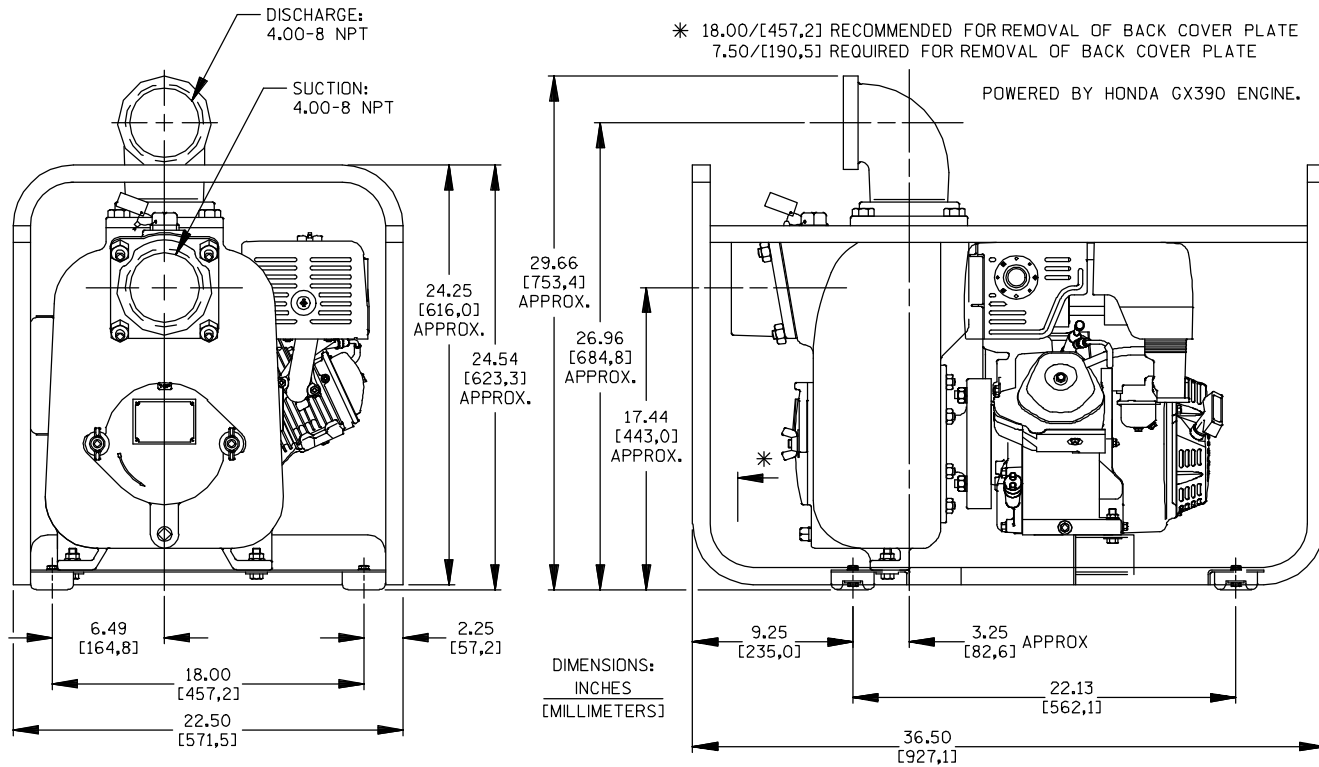
PO Box 180 | West Des Moines, IA 50061-0180
4328 North Dawson | Cumming, IA 50061
515-223-4144 | 515-981-0581 fax
info@gongol.net

Specification Data

SECTION 45, PAGE 828

APPROXIMATE DIMENSIONS and WEIGHTS

	14D1-GX390	14D52-GX390
NET WEIGHT:	200 LBS. (91 KG.)	294 LBS. (133 KG.)
SHIPPING WEIGHT:	270 LBS. (123 KG.)	364 LBS. (165 KG.)
EXPORT CRATE:	34.5 CU. FT. (0,6 CU. M.)	34.5 CU. FT. (0,6 CU. M.)
WHEEL KIT ADD 25 LBS. (11.3 KG.);		
SHIPPING CRATE (SEPARATE) 3 CU. FT. (0,1 CU. M.)		



GORMAN-RUPP PUMPS

www.grpumps.com

Specifications Subject to Change Without Notice

© Copyright Gorman-Rupp Pumps 2014



DJ Gongol & Associates, Inc.

PO Box 180 | West Des Moines, IA 50061-0180
4328 North Dawson | Cumming, IA 50061
515-223-4144 | 515-981-0581 fax
info@gongol.net